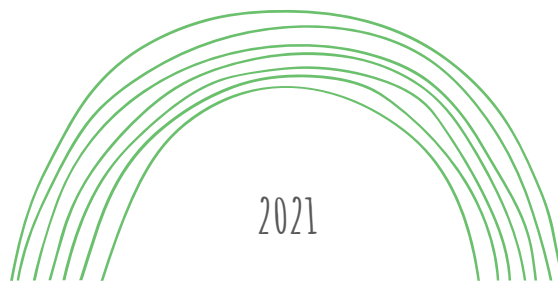


SETTING UP A COMMUNITY GARDEN STARTER KIT



2021



- 00 Develop a vision
- 01 Identify Group
- 02 Find a site
- 03 Promote
- 04 Management team
- 05 Finances
- 06 Design Phase
- 07 Garden guideline and job descriptions
- 08 Safety and insurance
- 09 Soil analysis and preparation
- 10 Work, learn, grow
- 11 Garden community event schedule
- 12 Monitor, evaluate, review, re-organize





00 DEVELOP A VISION

Introducing and looking at different community garden models, existing gardens in Luxembourg, preferably visiting some existing gardens of the preferred model.

Identify possible stakeholders to target (public or private).

The vision developed will stay flexible.

01 IDENTIFY GROUP

Advertise, distribute info leaflets, use social media, door-to-door inquiry,
have info stands at local events,
talk to community leaders, organizations, schools, refugees, elderly homes.

Identify interested people and keep communicating.



02 FIND A SITE

Investigate based on PAG, farmers, private people, schools, church yards, unused land, public or private properties in your municipality.

Follow the criteria on our site identification checklist.

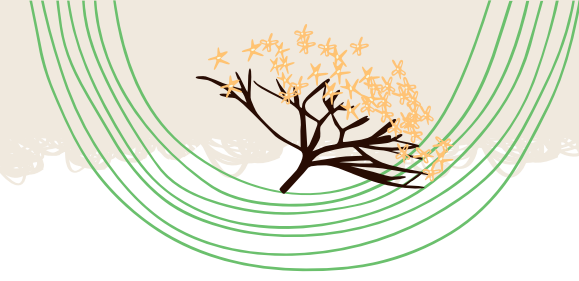
03 PROMOTE

Share your vision and raise awareness in your neighborhood or the quartier of your site through posters, website, picnics, school talks, newsletter.

You want to gain the ownership of the community for the garden.

Welcome any initiative that comes your way.

Communicate!



04 MANAGEMENT TEAM

Set up and organize your group of key people.

Decide on each group member's position (have a look at our key roles in community gardens), develop an action and business plan and redefine your vision.

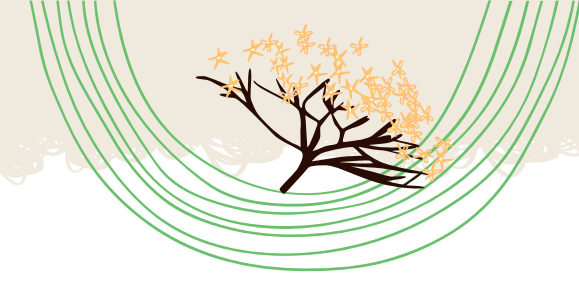
The aim here is to have a garden management committee and a garden name.

05 FINANCES

Identify potential sponsors for seeds, material, tools you will need for the garden.

Seek for collaborations with professionals or your municipality, donations, service offers or sales of garden products, local markets.

Reduce, re-use, repair, recycle, review.



06 DESIGN PHASE

Start with a good site analysis.

According to the type of garden you want to create, set up plots/parcels, fencing, building sheds or other furniture necessary for the good functioning, community spaces.

Brainstorm on ideas using the internet, books, visits.

Develop solutions for the water management, ongoing maintenance, reusable energy....

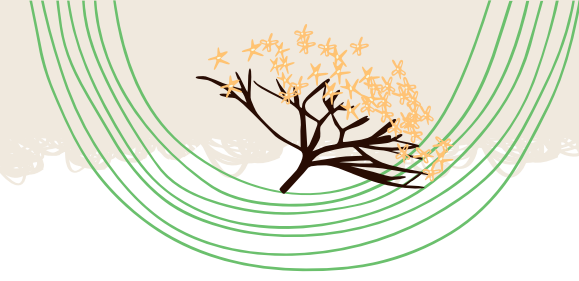
Here you can get creative... and CONSCIOUS about good practices and SUSTAINABILITY.

Learn about PERMACULTURE!

07 GARDEN GUIDELINE AND JOB DESCRIPTIONS

Write a charte for your garden, develop guidelines and make them visible on site.

Give job descriptions for the gardeners to follow, and set up rules, for example the use of common tools, water, planting, seeds to use, design principles...



08 SAFETY AND INSURANCE

Some people may come and visit or want to volunteer occasionally in your garden.

Perform a risk assessment, eliminate or indicate obvious hazards, provide training and proper use of tools, first aid kit, basic facilities, hygiene.

Buy an insurance.

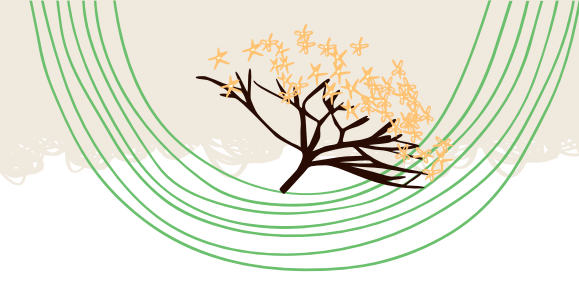
09 SOIL ANALYSIS AND PREPARATION

Depending on the former use of the site, perform a soil analysis and upgrade if necessary.

Clean, fertilize and aerate the site.

Or find alternatives, for example raised beds and sheet-mulch method.

Stay open to experiment!



10 WORK, LEARN, GROW

A garden is physical work, requires patience, understanding of nature, offers opportunity for learning new skills and to experiment, requires seeds, maintenance, care.

People working in a garden together get an opportunity to grow, communicate, exchange, share their ideas and culture.

A garden is not a good place for Ego.

Find solutions for conflict and remember:
'Gardeners are a first sign of commitment to community.'

11 GARDEN COMMUNITY EVENT SCHEDULE

Plan and organize several events and visits throughout the year according to the use of the garden, like trainings, workshops, celebrations, picnics, markets...

Have an annual schedule that members can feed and people can visualize.

Make your work known, it's so worth it.
Celebrate your community!



12 MONITOR, EVALUATE, REVIEW, RE-ORGANIZE

During the whole process of this step work, regularly take a step back with your committee and re-assess the steps taken so far, look at what works and what doesn't, stay flexible, stay adaptable, be open for change, communicate a lot and most of all:

ENJOY!

REMINDER

A community garden should be and stay an asset, a growth element, increasing quality of life for all participants and the community where it is set.

It is a POSITIVE space.